



Location: CMA1b - Oil St Community Liaison Centre

Report on 24-hour TSP monitoring

Action Level ( $\mu\text{g}/\text{m}^3$ ) - 176.7

Limit Level ( $\mu\text{g}/\text{m}^3$ ) - 260

Date	Sampling Time	Weather Condition	Filter paper no.	Filter Weight, g		Elapse Time, hr		Sampling Time, hr	Flow Rate, $\text{m}^3/\text{min}$			Total Volume, $\text{m}^3$	TSP Level, $\mu\text{g}/\text{m}^3$
				Initial	Final	Initial	Final		Initial, $Q_{si}$	Final, $Q_{sf}$	Average		
1-Feb-12	8:00	Sunny	001993	2.7360	2.9081	441.12	465.11	23.99	1.22	1.20	1.21	1740	99
7-Feb-12	8:00	Cloudy	002005	2.7433	2.8904	468.11	492.11	24.00	1.24	1.28	1.26	1816	81
16-Feb-12	8:00	Cloudy	002054	2.7899	2.9224	507.76	531.75	23.99	1.24	1.24	1.24	1790	74
18-Feb-12	8:00	Cloudy	002084	2.8032	3.0632	531.75	555.74	23.99	1.29	1.27	1.28	1838	141
24-Feb-12	8:00	Cloudy	002173	2.7512	2.9340	558.14	582.73	24.59	1.24	1.15	1.19	1762	104

\* Due to lack of electricity supply, the 24 hr-TSPs were rescheduled from 13 Feb 2012 to 16 Feb 2012

Report on 1-hour TSP monitoring

Action Level ( $\mu\text{g}/\text{m}^3$ ) - 320.1

Limit Level ( $\mu\text{g}/\text{m}^3$ ) - 500

Date	Sampling Time	Weather Condition	Filter paper no.	Filter Weight, g		Elapse Time, hr		Sampling Time, hr	Flow Rate, $\text{m}^3/\text{min}$			Total Volume, $\text{m}^3$	TSP Level, $\mu\text{g}/\text{m}^3$
				Initial	Final	Initial	Final		Initial, $Q_{si}$	Final, $Q_{sf}$	Average		
2-Feb-12	8:08	Sunny	002103	2.7861	2.7930	465.11	466.11	1.00	1.20	1.20	1.20	72	96
2-Feb-12	9:14	Sunny	002110	2.8120	2.8205	466.11	467.11	1.00	1.15	1.15	1.15	69	123
2-Feb-12	10:20	Sunny	002105	2.7811	2.7909	467.11	468.11	1.00	1.10	1.10	1.10	66	148
8-Feb-12	8:45	Cloudy	001970	2.8002	2.8116	492.11	493.11	1.00	1.25	1.25	1.25	75	152
8-Feb-12	9:50	Cloudy	001972	2.7643	2.7727	493.11	494.11	1.00	1.25	1.25	1.25	75	112
8-Feb-12	10:53	Cloudy	001974	2.7524	2.7622	494.71	495.71	1.00	1.25	1.25	1.25	75	130
14-Feb-12	10:30	Cloudy	002194	2.7293	2.7360	495.32	496.32	1.00	1.19	1.19	1.19	71	94
14-Feb-12	13:00	Cloudy	002198	2.7617	2.7702	496.32	497.32	1.00	1.22	1.22	1.22	73	117
14-Feb-12	14:05	Cloudy	002200	2.7613	2.7696	497.32	498.32	1.00	1.24	1.26	1.25	75	111
20-Feb-12	8:35	Cloudy	002210	2.7536	2.7685	555.74	556.74	1.00	1.24	1.27	1.26	75	198
20-Feb-12	9:38	Cloudy	002254	2.7664	2.7800	556.74	557.74	1.00	1.24	1.24	1.24	75	182
20-Feb-12	15:50	Cloudy	002119	2.7667	2.7845	557.74	558.74	1.00	1.27	1.24	1.26	75	236
25-Feb-12	8:45	Cloudy	002256	2.8082	2.8163	582.73	583.73	1.00	1.23	1.25	1.24	74	109
25-Feb-12	9:50	Cloudy	002206	2.7354	2.7437	583.73	584.73	1.00	1.23	1.30	1.26	76	110
25-Feb-12	10:55	Cloudy	002205	2.7288	2.7369	584.73	585.73	1.00	1.23	1.27	1.25	75	108



Location: CMA2a - Causeway Bay Community Centre

Report on 24-hour TSP monitoring  
 Action Level ( $\mu\text{g}/\text{m}^3$ ) - 169.5  
 Limit Level ( $\mu\text{g}/\text{m}^3$ ) - 260

Date	Sampling Time	Weather Condition	Filter paper no.	Filter Weight, g		Elapse Time, hr		Sampling Time, hr	Flow Rate, $\text{m}^3/\text{min}$			Total Volume, $\text{m}^3$	TSP Level, $\mu\text{g}/\text{m}^3$
				Initial	Final	Initial	Final		Initial, $Q_{si}$	Final, $Q_{sf}$	Average		
1-Feb-12	8:00	Sunny	001989	2.7633	2.8787	10251.90	10275.90	24.00	1.24	1.29	1.26	1819	63
7-Feb-12	8:00	Cloudy	002004	2.7482	2.9003	10278.90	10302.88	23.98	1.50	1.46	1.48	2128	71
13-Feb-12	8:00	Cloudy	002063	2.7787	2.9933	10305.89	10329.90	24.01	1.47	1.42	1.44	2080	103
18-Feb-12	8:00	Cloudy	002201	2.7590	3.0172	10332.90	10356.89	23.99	1.49	1.39	1.44	2079	124
24-Feb-12	8:00	Cloudy	002182	2.7366	2.8782	10359.89	10383.88	23.99	1.50	1.39	1.44	2080	68

Report on 1-hour TSP monitoring  
 Action Level ( $\mu\text{g}/\text{m}^3$ ) - 323.4  
 Limit Level ( $\mu\text{g}/\text{m}^3$ ) - 500

Date	Sampling Time	Weather Condition	Filter paper no.	Filter Weight, g		Elapse Time, hr		Sampling Time, hr	Flow Rate, $\text{m}^3/\text{min}$			Total Volume, $\text{m}^3$	TSP Level, $\mu\text{g}/\text{m}^3$
				Initial	Final	Initial	Final		Initial, $Q_{si}$	Final, $Q_{sf}$	Average		
2-Feb-12	8:31	Sunny	002104	2.7929	2.8014	10275.90	10276.90	1.00	1.45	1.45	1.45	87	98
2-Feb-12	9:36	Sunny	002109	2.8168	2.8263	10276.90	10277.90	1.00	1.47	1.47	1.47	88	107
2-Feb-12	10:55	Sunny	002108	2.7929	2.8088	10277.90	10278.90	1.00	1.47	1.45	1.46	88	181
8-Feb-12	8:30	Cloudy	001969	2.8060	2.8173	10302.89	10303.89	1.00	1.46	1.46	1.46	87	129
8-Feb-12	9:46	Cloudy	001971	2.7596	2.7697	10303.89	10304.89	1.00	1.51	1.46	1.48	89	113
8-Feb-12	10:58	Cloudy	001973	2.7751	2.7838	10304.89	10305.89	1.00	1.51	1.48	1.50	90	97
14-Feb-12	9:10	Cloudy	002197	2.7501	2.7562	10329.90	10330.90	1.00	1.44	1.44	1.44	86	71
14-Feb-12	10:15	Cloudy	002193	2.7509	2.7574	10330.90	10331.90	1.00	1.44	1.44	1.44	86	75
14-Feb-12	13:00	Cloudy	002196	2.7407	2.7487	10331.90	10332.90	1.00	1.47	1.47	1.47	88	91
20-Feb-12	8:25	Cloudy	002221	2.7914	2.8032	10356.89	10357.89	1.00	1.50	1.50	1.50	90	131
20-Feb-12	9:27	Cloudy	002211	2.7254	2.7406	10357.89	10358.89	1.00	1.50	1.50	1.50	90	169
20-Feb-12	15:36	Cloudy	002118	2.7806	2.7942	10358.89	10359.89	1.00	1.50	1.50	1.50	90	151
25-Feb-12	8:32	Cloudy	002255	2.7932	2.8017	10383.88	10384.88	1.00	1.47	1.50	1.49	89	95
25-Feb-12	9:36	Cloudy	002209	2.7622	2.7710	10384.88	10385.88	1.00	1.47	1.47	1.47	88	100
25-Feb-12	10:40	Cloudy	002208	2.7504	2.7598	10385.88	10386.88	1.00	1.47	1.47	1.47	88	106



Location: CMA3a - CWB PRE Site Office Area

Report on 24-hour TSP monitoring  
 Action Level ( $\mu\text{g}/\text{m}^3$ ) - 171  
 Limit Level ( $\mu\text{g}/\text{m}^3$ ) - 260

Date	Sampling Time	Weather Condition	Filter paper no.	Filter Weight, g		Elapse Time, hr		Sampling Time, hr	Flow Rate, $\text{m}^3/\text{min}$			Total Volume, $\text{m}^3$	TSP Level, $\mu\text{g}/\text{m}^3$
				Initial	Final	Initial	Final		Initial, $Q_{si}$	Final, $Q_{sf}$	Average		
1-Feb-12	8:00	Sunny	002021	2.7961	3.0180	10819.42	10843.41	23.99	1.42	1.42	1.42	2046	108
7-Feb-12	8:00	Cloudy	001968	2.7981	3.0211	10846.41	10870.41	24.00	1.36	1.37	1.37	1969	113
14-Feb-12	8:00	Cloudy	001985	2.7534	2.9250	10898.64	10922.65	24.01	1.38	1.32	1.35	1949	88
18-Feb-12	8:00	Cloudy	002053	2.7979	3.0659	10922.65	10946.64	23.99	1.33	1.33	1.33	1912	140
24-Feb-12	8:00	Cloudy	002187	2.7404	2.8786	10949.64	10973.63	23.99	1.33	1.33	1.33	1913	72

\* Due to lack of electricity supply, the 24 hr-TSPs were rescheduled from 13 Feb 2012 to 14 Feb 2012

Report on 1-hour TSP monitoring  
 Action Level ( $\mu\text{g}/\text{m}^3$ ) - 311.3  
 Limit Level ( $\mu\text{g}/\text{m}^3$ ) - 500

Date	Sampling Time	Weather Condition	Filter paper no.	Filter Weight, g		Elapse Time, hr		Sampling Time, hr	Flow Rate, $\text{m}^3/\text{min}$			Total Volume, $\text{m}^3$	TSP Level, $\mu\text{g}/\text{m}^3$
				Initial	Final	Initial	Final		Initial, $Q_{si}$	Final, $Q_{sf}$	Average		
2-Feb-12	13:00	Cloudy	002089	2.7948	2.8063	10843.41	10844.41	1.00	1.33	1.33	1.33	80	144
2-Feb-12	15:30	Cloudy	001963	2.7800	2.8028	10844.41	10845.41	1.00	1.33	1.33	1.33	80	285
2-Feb-12	16:40	Cloudy	001964	2.8026	2.8171	10845.41	10846.41	1.00	1.33	1.33	1.33	80	182
8-Feb-12	8:38	Cloudy	002106	2.7912	2.8142	10870.41	10871.41	1.00	1.40	1.40	1.40	84	273
8-Feb-12	9:43	Cloudy	002128	2.7470	2.7658	10871.41	10872.41	1.00	1.43	1.43	1.43	86	219
8-Feb-12	10:48	Cloudy	002122	2.7622	2.7766	10872.41	10873.41	1.00	1.43	1.46	1.45	87	166
14-Feb-12	10:35	Cloudy	001977	2.7645	2.7751	10895.64	10896.64	1.00	1.33	1.33	1.33	80	133
14-Feb-12	13:12	Cloudy	001979	2.7502	2.7643	10896.64	10897.64	1.00	1.33	1.33	1.33	80	177
14-Feb-12	14:18	Cloudy	001981	2.7557	2.7653	10897.64	10898.64	1.00	1.33	1.33	1.33	80	121
20-Feb-12	8:38	Cloudy	002133	2.7406	2.7527	10946.64	10947.64	1.00	1.27	1.21	1.24	74	162
20-Feb-12	9:43	Cloudy	002135	2.7502	2.7618	10947.64	10948.64	1.00	1.33	1.33	1.33	80	145
20-Feb-12	15:25	Cloudy	002117	2.7780	2.7908	10948.64	10949.64	1.00	1.30	1.33	1.32	79	162
25-Feb-12	8:11	Cloudy	002142	2.7451	2.7552	10973.63	10974.63	1.00	1.30	1.30	1.30	78	129
25-Feb-12	9:16	Cloudy	002144	2.7284	2.7374	10974.63	10975.63	1.00	1.33	1.27	1.30	78	115
25-Feb-12	10:23	Cloudy	002146	2.7325	2.7427	10975.63	10976.63	1.00	1.27	1.27	1.27	76	134



Location: CMA4a - SPCA

Report on 24-hour TSP monitoring

Action Level ( $\mu\text{g}/\text{m}^3$ ) - 171.2  
 Limit Level ( $\mu\text{g}/\text{m}^3$ ) - 260

Date	Sampling Time	Weather Condition	Filter paper no.	Filter Weight, g		Elapse Time, hr		Sampling Time, hr	Flow Rate, $\text{m}^3/\text{min}$			Total Volume, $\text{m}^3$	TSP Level, $\mu\text{g}/\text{m}^3$
				Initial	Final	Initial	Final		Initial, $Q_{si}$	Final, $Q_{sf}$	Average		
1-Feb-12	8:00	Sunny	001725	2.7689	2.8984	14470.32	14494.32	24.00	1.35	1.37	1.36	1956	66
7-Feb-12	8:00	Cloudy	001967	2.8054	3.0973	14497.32	14521.32	24.00	1.37	1.36	1.36	1961	149
13-Feb-12	8:00	Cloudy	002123	2.7489	3.0493	14524.32	14548.32	24.00	1.34	1.36	1.35	1950	154
18-Feb-12	8:00	Cloudy	001983	2.7556	2.9606	14551.32	14575.31	23.99	1.32	1.32	1.32	1902	108
24-Feb-12	8:00	Cloudy	002116	2.7746	2.8735	14578.31	14602.30	23.99	1.32	1.30	1.31	1887	52

Report on 1-hour TSP monitoring

Action Level ( $\mu\text{g}/\text{m}^3$ ) - 312.5  
 Limit Level ( $\mu\text{g}/\text{m}^3$ ) - 500

Date	Sampling Time	Weather Condition	Filter paper no.	Filter Weight, g		Elapse Time, hr		Sampling Time, hr	Flow Rate, $\text{m}^3/\text{min}$			Total Volume, $\text{m}^3$	TSP Level, $\mu\text{g}/\text{m}^3$
				Initial	Final	Initial	Final		Initial, $Q_{si}$	Final, $Q_{sf}$	Average		
2-Feb-12	13:00	Sunny	002107	2.7820	2.7953	14494.32	14495.32	1.00	1.37	1.32	1.35	81	165
2-Feb-12	15:15	Sunny	001961	2.7760	2.7897	14495.32	14496.32	1.00	1.35	1.35	1.35	81	170
2-Feb-12	16:57	Sunny	001962	2.7789	2.7940	14496.32	14497.32	1.00	1.32	1.32	1.32	79	190
8-Feb-12	8:22	Cloudy	002130	2.7449	2.7504	14521.32	14522.32	1.00	1.33	1.33	1.33	80	69
8-Feb-12	9:28	Cloudy	002129	2.7630	2.7763	14522.32	14523.32	1.00	1.38	1.38	1.38	83	161
8-Feb-12	10:35	Cloudy	002121	2.7456	2.7532	14523.32	14524.32	1.00	1.33	1.33	1.33	80	95
14-Feb-12	10:59	Cloudy	001978	2.7274	2.7338	14548.32	14549.32	1.00	1.32	1.32	1.32	79	81
14-Feb-12	13:31	Cloudy	001980	2.7521	2.7578	14549.32	14550.32	1.00	1.32	1.27	1.30	78	73
14-Feb-12	14:36	Cloudy	001982	2.7360	2.7464	14550.32	14551.32	1.00	1.32	1.32	1.32	79	131
20-Feb-12	8:20	Cloudy	002132	2.7422	2.7517	14575.31	14576.31	1.00	1.16	1.16	1.16	70	136
20-Feb-12	9:25	Cloudy	002134	2.7307	2.7416	14576.31	14577.31	1.00	1.16	1.11	1.14	68	160
20-Feb-12	10:32	Cloudy	002136	2.7409	2.7449	14577.31	14578.31	1.00	1.16	1.16	1.16	70	57
25-Feb-12	8:31	Cloudy	002143	2.7490	2.7585	14602.30	14603.30	1.00	1.32	1.30	1.31	79	121
25-Feb-12	9:35	Cloudy	002145	2.7345	2.7439	14603.30	14604.30	1.00	1.32	1.32	1.32	79	118
25-Feb-12	10:41	Cloudy	002140	2.7414	2.7499	14604.30	14605.30	1.00	1.35	1.32	1.33	80	106



Location: CMA5a - Children Garden opposite to Pedestrian Plaza

Report on 24-hour TSP monitoring

Action Level ( $\mu\text{g}/\text{m}^3$ ) - 181  
Limit Level ( $\mu\text{g}/\text{m}^3$ ) - 260

Date	Sampling Time	Weather Condition	Filter paper no.	Filter Weight, g		Elapse Time, hr		Sampling Time, hr	Flow Rate, $\text{m}^3/\text{min}$			Total Volume, $\text{m}^3$	TSP Level, $\mu\text{g}/\text{m}^3$
				Initial	Final	Initial	Final		Initial, $Q_{si}$	Final, $Q_{sf}$	Average		
1-Feb-12	8:00	Sunny	002070	2.7990	2.9433	15463.74	15487.64	23.90	1.26	1.26	1.26	1804	80
7-Feb-12	8:00	Cloudy	001966	2.8043	2.9097	15490.64	15514.64	24.00	1.26	1.31	1.29	1852	57
13-Feb-12	8:00	Cloudy	001976	2.7490	2.9003	15517.64	15541.64	24.00	1.26	1.30	1.28	1840	82
20-Feb-12	15:18	Cloudy	002188	2.7335	2.8693	15551.44	15575.42	23.98	1.28	1.28	1.28	1841	74
24-Feb-12	8:00	Cloudy	002113	2.8214	2.9115	15575.42	15599.42	24.00	1.28	1.28	1.28	1842	49

\* Due to lack of electricity supply, the 24 hr-TSPs were rescheduled from 18 Feb 2012 to 20 Feb 2012

Report on 1-hour TSP monitoring

Level ( $\mu\text{g}/\text{m}^3$ ) - 332  
Level ( $\mu\text{g}/\text{m}^3$ ) - 500

Date	Sampling Time	Weather Condition	Filter paper no.	Filter Weight, g		Elapse Time, hr		Sampling Time, hr	Flow Rate, $\text{m}^3/\text{min}$			Total Volume, $\text{m}^3$	TSP Level, $\mu\text{g}/\text{m}^3$
				Initial	Final	Initial	Final		Initial, $Q_{si}$	Final, $Q_{sf}$	Average		
2-Feb-12	8:05	Sunny	002075	2.7856	2.7929	15487.64	15488.64	1.00	1.28	1.28	1.28	77	95
2-Feb-12	9:08	Sunny	002102	2.7998	2.8067	15488.64	15489.64	1.00	1.28	1.26	1.27	76	91
2-Feb-12	10:15	Sunny	002101	2.8017	2.8120	15489.64	15490.64	1.00	1.28	1.28	1.28	77	134
8-Feb-12	8:05	Cloudy	002096	2.7914	2.7986	15514.64	15515.64	1.00	1.31	1.31	1.31	79	91
8-Feb-12	9:07	Cloudy	002091	2.7967	2.8034	15515.64	15516.64	1.00	1.31	1.31	1.31	79	85
8-Feb-12	14:23	Cloudy	002090	2.7977	2.8055	15516.64	15517.64	1.00	1.31	1.31	1.31	79	99
14-Feb-12	8:11	Cloudy	002078	2.8061	2.8119	15541.64	15542.64	1.00	1.25	1.30	1.28	77	76
14-Feb-12	9:22	Cloudy	002088	2.7787	2.7834	15542.64	15543.64	1.00	1.16	1.16	1.16	69	68
14-Feb-12	10:25	Cloudy	002081	2.7932	2.7990	15543.64	15544.64	1.00	1.25	1.25	1.25	75	77
20-Feb-12	8:20	Cloudy	002111	2.8254	2.8288	15548.44	15549.44	1.00	1.30	1.26	1.28	77	44
20-Feb-12	13:00	Cloudy	002112	2.8284	2.8389	15549.44	15550.44	1.00	1.30	1.30	1.30	78	134
20-Feb-12	14:15	Cloudy	002174	2.7533	2.7566	15550.44	15551.44	1.00	1.26	1.26	1.26	75	44
25-Feb-12	8:00	Cloudy	002120	2.7653	2.7703	15599.42	15600.42	1.00	1.26	1.26	1.26	76	66
25-Feb-12	9:05	Cloudy	002114	2.8158	2.8205	15600.42	15601.42	1.00	1.23	1.21	1.22	73	64
25-Feb-12	10:10	Cloudy	002030	2.7724	2.7784	15601.42	15602.42	1.00	1.23	1.21	1.22	73	82



Location: MA1e - International Finance Centre (Eastern Wing)

Report on 24-hour TSP monitoring  
 Action Level ( $\mu\text{g}/\text{m}^3$ ) - 173.4  
 Limit Level ( $\mu\text{g}/\text{m}^3$ ) - 260

Date	Sampling Time	Weather Condition	Filter paper no.	Filter Weight, g		Elapse Time, hr		Sampling Time, hr	Flow Rate, $\text{m}^3/\text{min}$			Total Volume, $\text{m}^3$	TSP Level, $\mu\text{g}/\text{m}^3$
				Initial	Final	Initial	Final		Initial, $Q_{si}$	Final, $Q_{sf}$	Average		
1-Feb-12	8:00	Sunny	001999	2.7650	2.8898	8142.35	8166.35	24.00	1.22	1.21	1.21	1748	71
7-Feb-12	8:00	Cloudy	002065	2.8143	2.9376	8169.35	8193.35	24.00	1.21	1.22	1.22	1750	70
13-Feb-12	8:00	Cloudy	002016	2.7981	2.9347	8196.35	8220.35	24.00	1.16	1.21	1.18	1703	80
18-Feb-12	8:00	Cloudy	002056	2.8020	2.9912	8223.36	8247.35	23.99	1.18	1.21	1.20	1723	110
24-Feb-12	8:00	Cloudy	002177	2.7663	2.8614	8250.35	8274.34	23.99	1.16	1.16	1.16	1666	57

Report on 1-hour TSP monitoring  
 Action Level ( $\mu\text{g}/\text{m}^3$ ) - 325.1  
 Limit Level ( $\mu\text{g}/\text{m}^3$ ) - 500

Date	Sampling Time	Weather Condition	Filter paper no.	Filter Weight, g		Elapse Time, hr		Sampling Time, hr	Flow Rate, $\text{m}^3/\text{min}$			Total Volume, $\text{m}^3$	TSP Level, $\mu\text{g}/\text{m}^3$
				Initial	Final	Initial	Final		Initial, $Q_{si}$	Final, $Q_{sf}$	Average		
2-Feb-12	8:22	Cloudy	002019	2.8057	2.8105	8166.35	8167.35	1.00	1.19	1.19	1.19	71	67
2-Feb-12	9:37	Cloudy	002024	2.7877	2.7934	8167.35	8168.35	1.00	1.19	1.19	1.19	71	80
2-Feb-12	11:00	Cloudy	002026	2.7861	2.7927	8168.35	8169.35	1.00	1.19	1.19	1.19	71	93
8-Feb-12	8:15	Cloudy	002022	2.8018	2.8078	8193.35	8194.35	1.00	1.22	1.22	1.22	73	82
8-Feb-12	9:37	Cloudy	002011	2.7409	2.7471	8194.35	8195.35	1.00	1.22	1.22	1.22	73	84
8-Feb-12	10:47	Cloudy	002013	2.7395	2.7467	8195.35	8196.35	1.00	1.22	1.22	1.22	73	98
14-Feb-12	8:28	Cloudy	002062	2.8141	2.8224	8220.36	8221.36	1.00	1.15	1.21	1.18	71	117
14-Feb-12	9:36	Cloudy	002060	2.8059	2.8123	8221.36	8222.36	1.00	1.15	1.15	1.15	69	92
14-Feb-12	10:40	Cloudy	002058	2.8166	2.8214	8222.36	8223.36	1.00	1.15	1.15	1.15	69	69
20-Feb-12	8:35	Cloudy	002052	2.7839	2.7895	8247.35	8248.35	1.00	1.16	1.19	1.17	70	80
20-Feb-12	9:41	Cloudy	002181	2.7476	2.7520	8248.35	8249.35	1.00	1.16	1.16	1.16	69	63
20-Feb-12	10:45	Cloudy	002179	2.7611	2.7691	8249.35	8250.35	1.00	1.16	1.16	1.16	69	115
25-Feb-12	8:46	Cloudy	002172	2.7538	2.7599	8274.34	8275.34	1.00	1.19	1.19	1.19	71	86
25-Feb-12	9:50	Cloudy	002170	2.7685	2.7747	8275.34	8276.34	1.00	1.16	1.19	1.17	70	88
25-Feb-12	10:52	Cloudy	002168	2.7840	2.7918	8276.34	8277.34	1.00	1.16	1.21	1.19	71	110



Location: MA1w - International Finance Centre (Western Wing)

Report on 24-hour TSP monitoring

Action Level ( $\mu\text{g}/\text{m}^3$ ) - 173.4

Limit Level ( $\mu\text{g}/\text{m}^3$ ) - 260

Date	Sampling Time	Weather Condition	Filter paper no.	Filter Weight, g		Elapse Time, hr		Sampling Time, hr	Flow Rate, $\text{m}^3/\text{min}$			Total Volume, $\text{m}^3$	TSP Level, $\mu\text{g}/\text{m}^3$
				Initial	Final	Initial	Final		Initial, $Q_{si}$	Final, $Q_{sf}$	Average		
1-Feb-12	8:00	Sunny	001998	2.7510	2.9136	11270.71	11294.71	24.00	1.46	1.48	1.47	2115	77
7-Feb-12	8:00	Cloudy	002064	2.7987	2.9217	11297.71	11321.71	24.00	1.36	1.46	1.41	2027	61
13-Feb-12	8:00	Cloudy	002015	2.7755	2.9277	11324.71	11348.71	24.00	1.43	1.43	1.43	2056	74
18-Feb-12	8:00	Cloudy	002055	2.7834	2.9834	11351.71	11375.70	24.00	1.43	1.38	1.40	2022	99
24-Feb-12	8:00	Cloudy	002176	2.7664	2.8878	11378.70	11402.69	23.99	1.38	1.45	1.42	2040	59

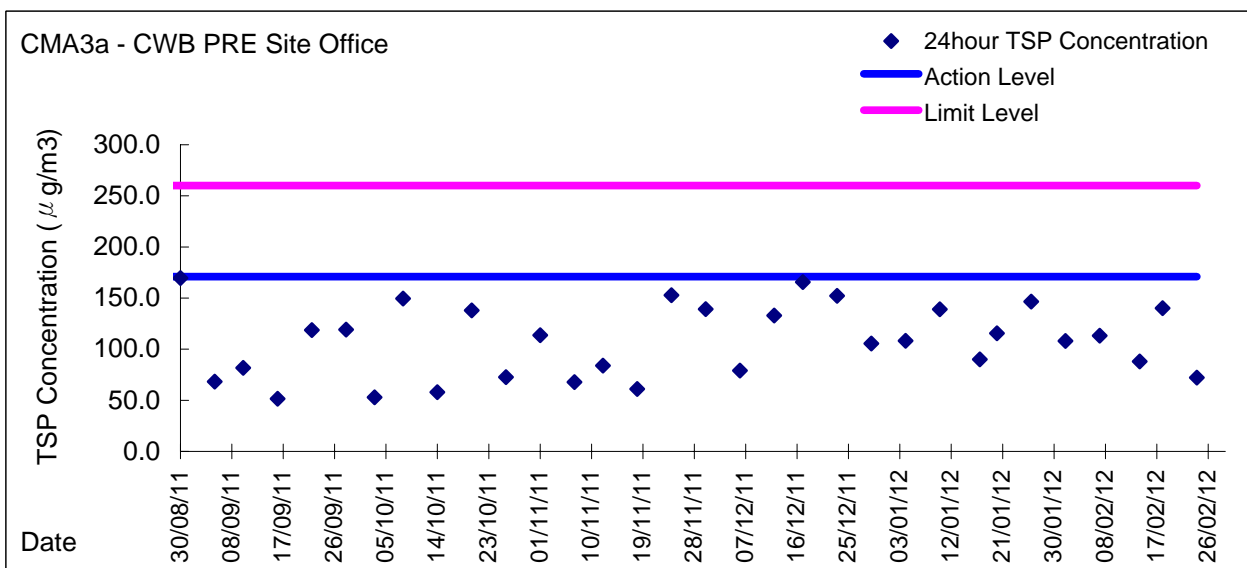
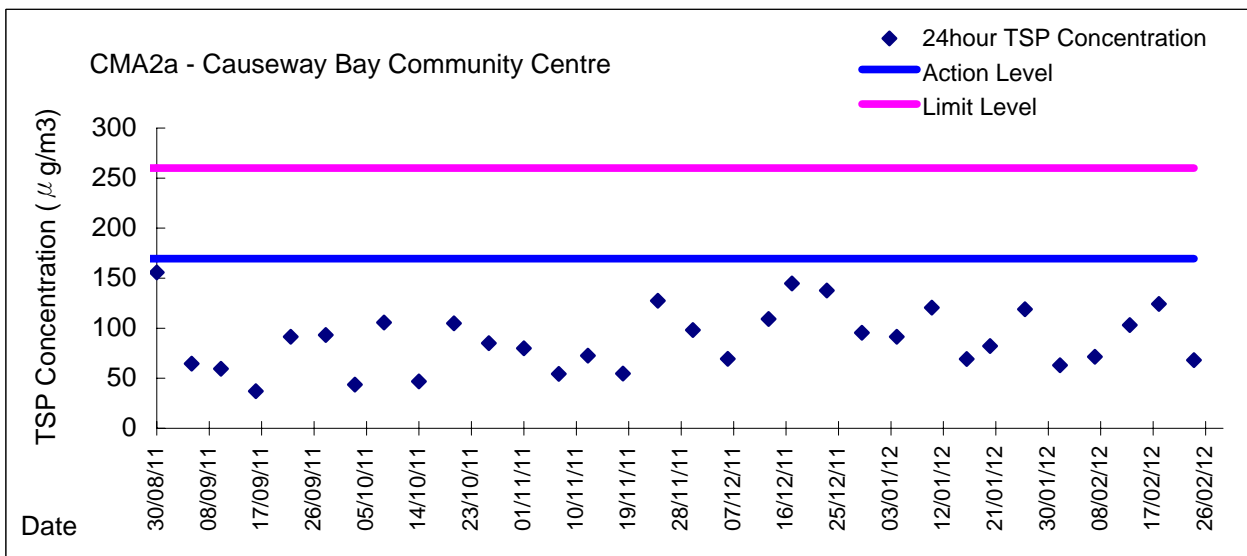
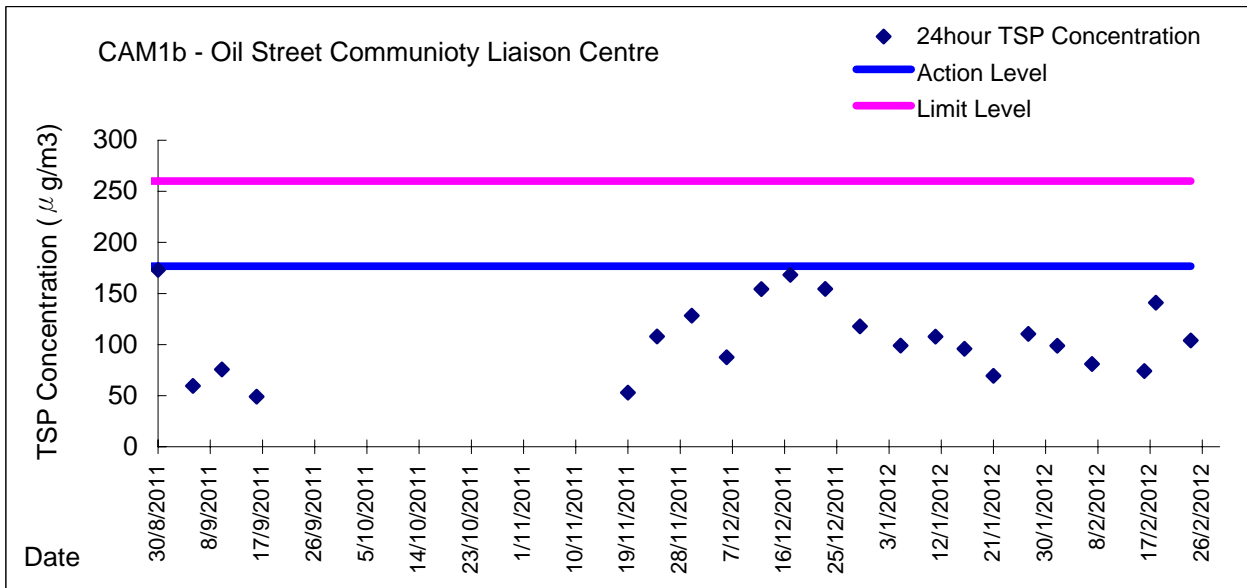
Report on 1-hour TSP monitoring

Action Level ( $\mu\text{g}/\text{m}^3$ ) - 325.1

Limit Level ( $\mu\text{g}/\text{m}^3$ ) - 500

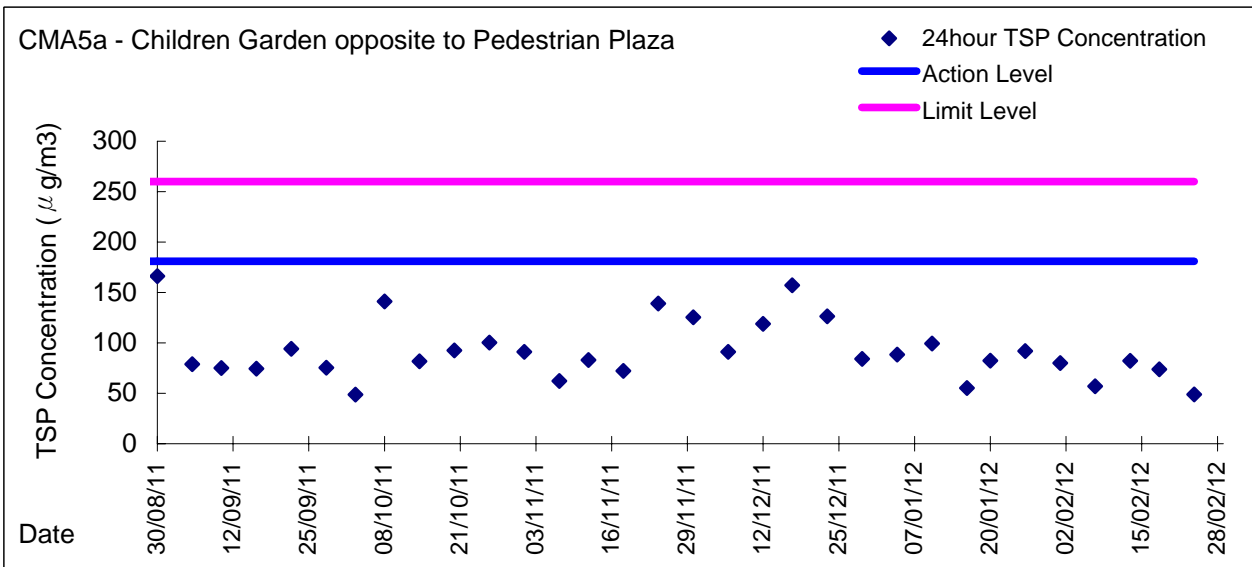
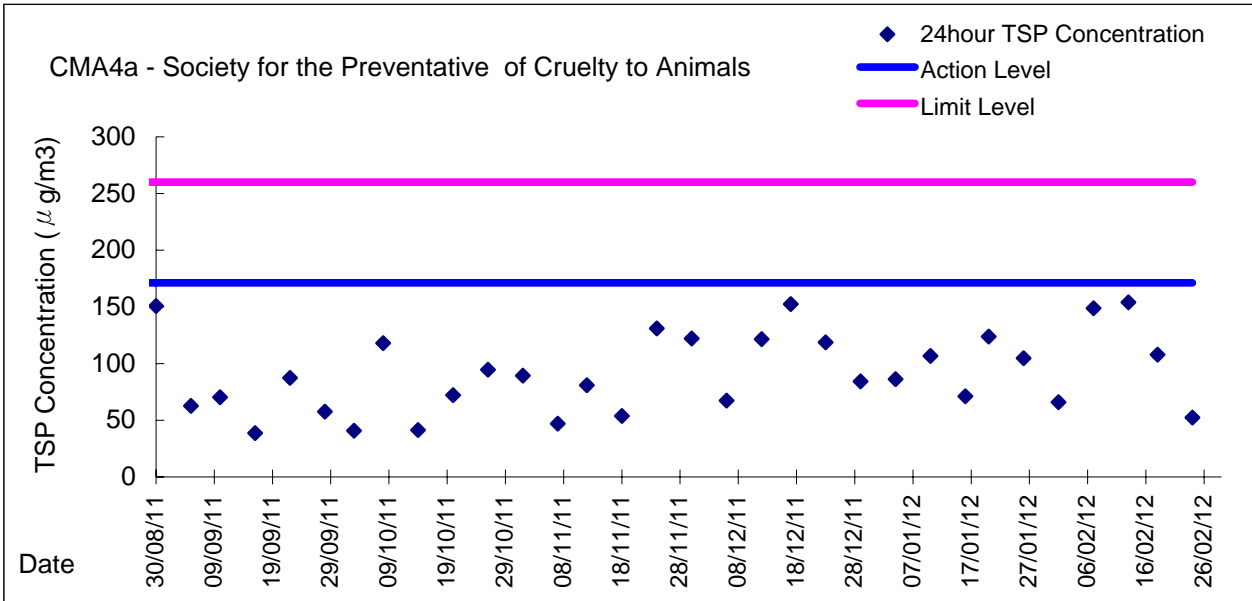
Date	Sampling Time	Weather Condition	Filter paper no.	Filter Weight, g		Elapse Time, hr		Sampling Time, hr	Flow Rate, $\text{m}^3/\text{min}$			Total Volume, $\text{m}^3$	TSP Level, $\mu\text{g}/\text{m}^3$
				Initial	Final	Initial	Final		Initial, $Q_{si}$	Final, $Q_{sf}$	Average		
2-Feb-12	8:23	Sunny	002025	2.7923	2.8002	11294.71	11295.71	1.00	1.48	1.46	1.47	88	90
2-Feb-12	9:48	Sunny	002027	2.7780	2.7878	11295.71	11296.71	1.00	1.46	1.43	1.44	87	113
2-Feb-12	10:50	Sunny	002066	2.7867	2.7951	11296.71	11297.71	1.00	1.43	1.43	1.43	86	98
8-Feb-12	8:24	Cloudy	002023	2.8015	2.8083	11321.71	11322.71	1.00	1.44	1.44	1.44	87	79
8-Feb-12	9:44	Cloudy	002012	2.7348	2.7422	11322.71	11323.71	1.00	1.44	1.44	1.44	87	86
8-Feb-12	10:52	Cloudy	002014	2.7553	2.7614	11323.71	11324.71	1.00	1.47	1.42	1.44	87	71
14-Feb-12	8:38	Cloudy	002061	2.8219	2.8281	11348.71	11349.71	1.00	1.43	1.43	1.43	86	72
14-Feb-12	9:45	Cloudy	002059	2.7975	2.8051	11349.71	11350.71	1.00	1.40	1.40	1.40	84	90
14-Feb-12	10:48	Cloudy	002057	2.7984	2.8056	11350.71	11351.71	1.00	1.38	1.38	1.38	83	87
20-Feb-12	8:42	Cloudy	002190	2.7394	2.7455	11375.70	11376.70	1.00	1.38	1.43	1.41	84	72
20-Feb-12	9:48	Cloudy	002180	2.7541	2.7598	11376.70	11377.70	1.00	1.43	1.38	1.41	84	68
20-Feb-12	10:51	Cloudy	002178	2.7606	2.7674	11377.70	11378.70	1.00	1.41	1.48	1.44	87	79
25-Feb-12	8:53	Cloudy	002171	2.7717	2.7786	11402.69	11403.69	1.00	1.48	1.48	1.48	89	78
25-Feb-12	9:55	Cloudy	002169	2.7508	2.7594	11403.69	11404.69	1.00	1.45	1.48	1.47	88	98
25-Feb-12	11:00	Cloudy	002167	2.7723	2.7815	11404.69	11405.69	1.00	1.48	1.48	1.48	89	104

**Graphic Presentation of 24 hour TSP Result**

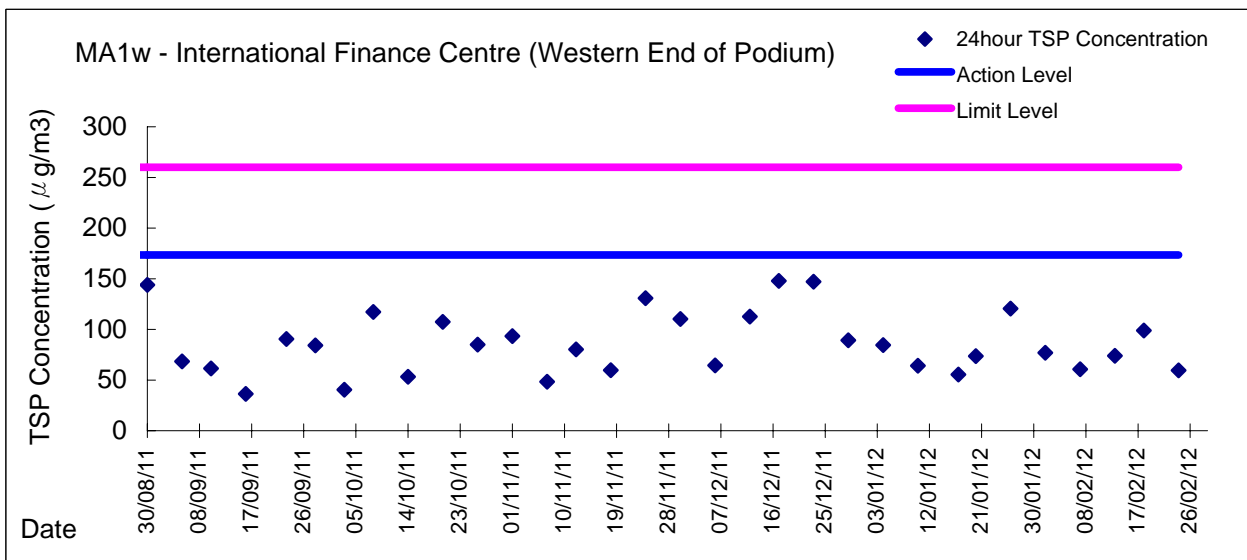
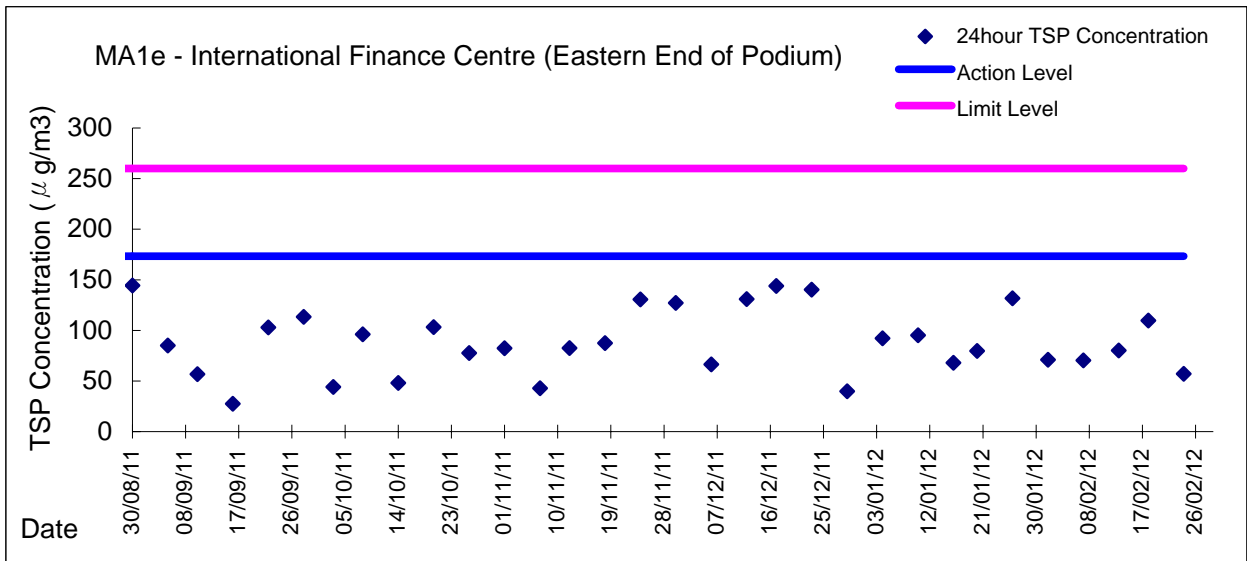




**Graphic Presentation of 24 hour TSP Result**

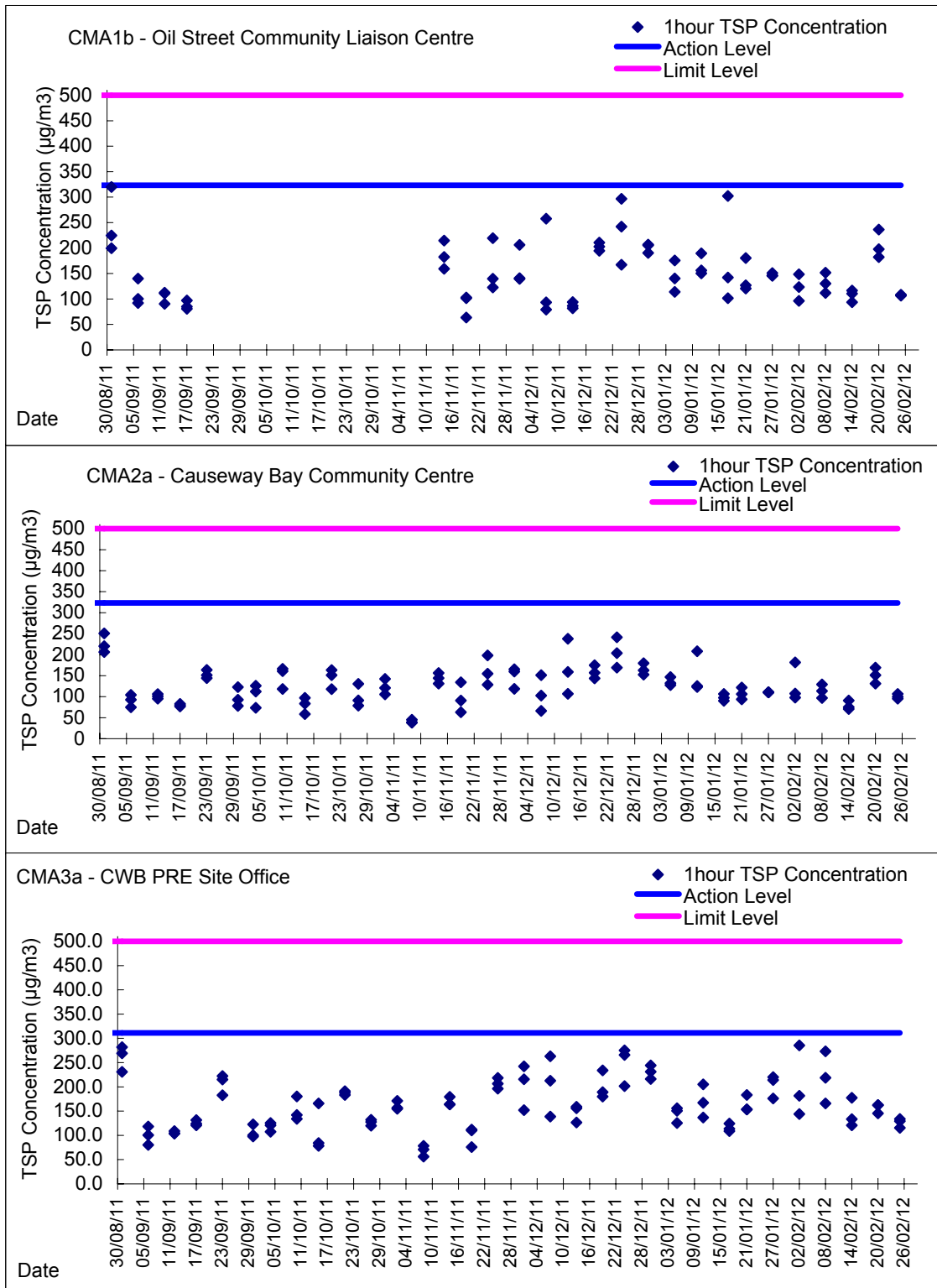


**Graphic Presentation of 24 hour TSP Result**

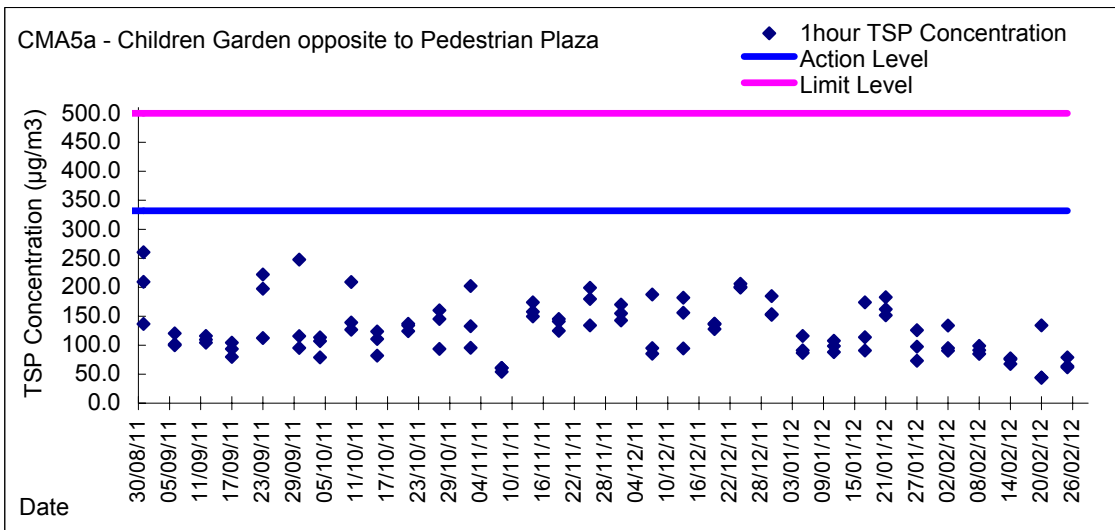
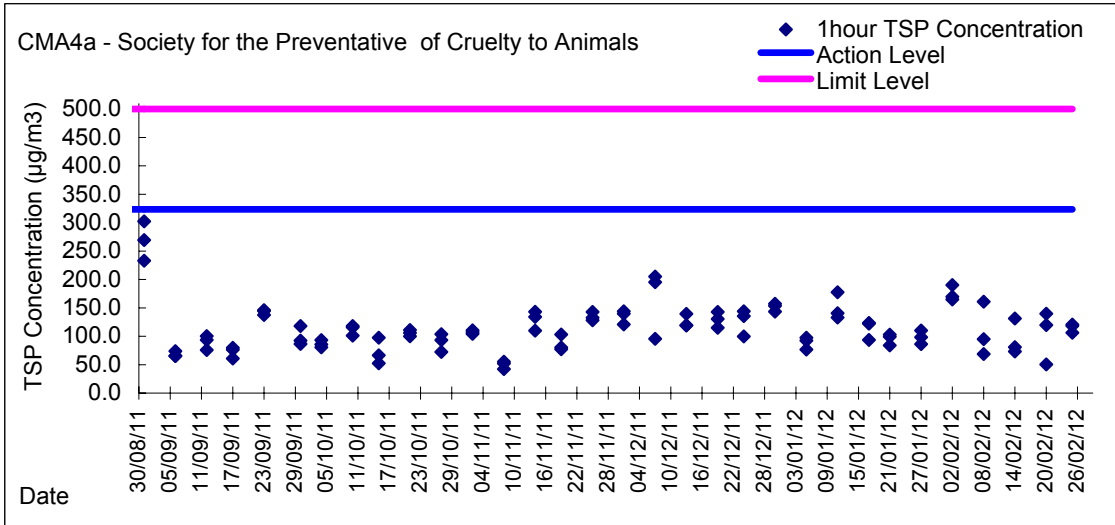




Graphic Presentation of 1 hour TSP Result



**Graphic Presentation of 1 hour TSP Result**



**Graphic Presentation of 1 hour TSP Result**

